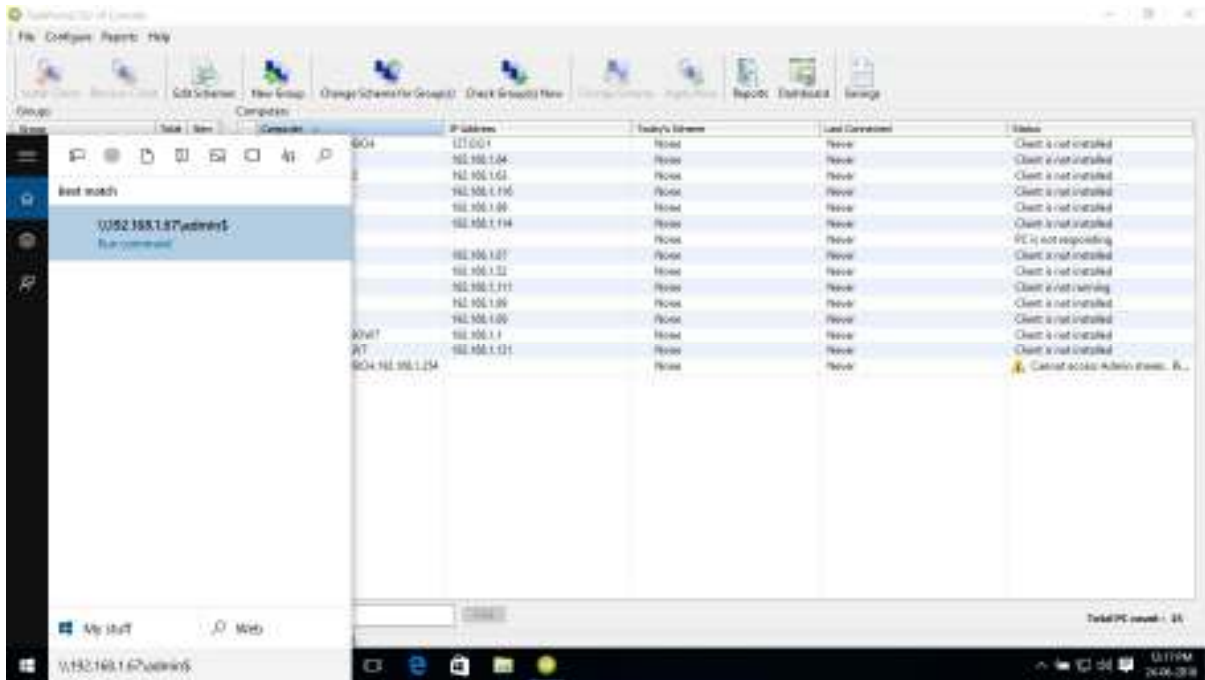
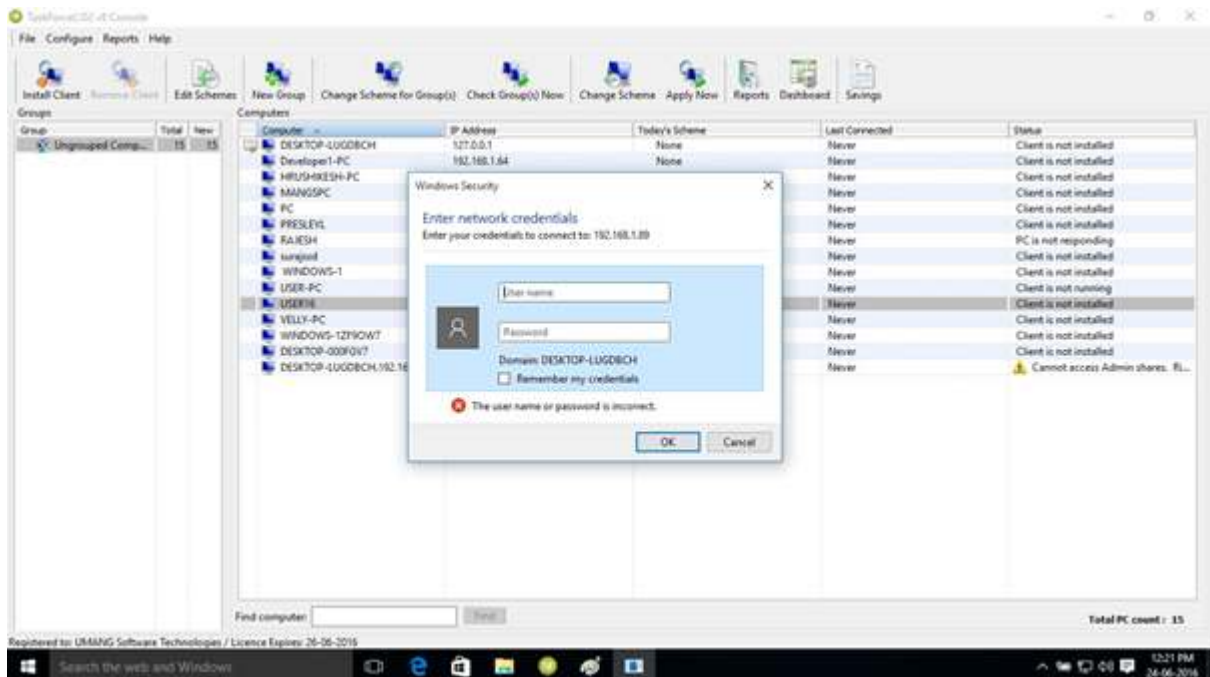


Client Installation of TaskForceCO2

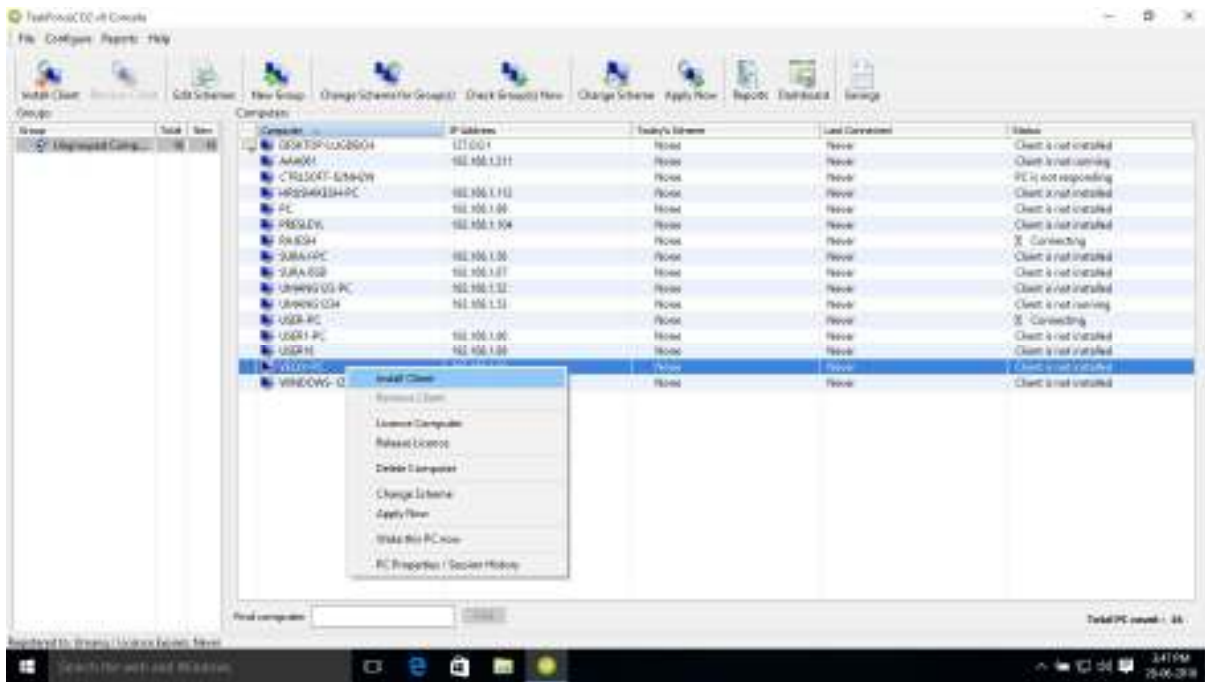
1. TaskForceCO2 uses either Admin\$ or c\$ to copy the client exe to the remote PC and execute it. So before attempting to install the client on any remote machine, first we need to check for the shares of that system by specifying the UNC path followed by \share_name\$ (for e.g [\\remotemachineshostname\admin\\$](#) or [\\remotemachinesipaddress\admin\\$](#)).



2. This will prompt the user login page asking for remote systems Username and Password.



3. Once you can successfully open the remote system's c:/windows directory you can proceed to install client from the TaskForceCO2 console.



Problem with Newer Windows Operating Systems (Win 8.1, Win 10, server 2012R2 and server 2016)

1. When checking for the shares of a remote windows 8.1 or 10 PC even if correct username and password is specified it says access denied. This is because Microsoft has disabled some hidden shares (like Admin\$, c\$) by default for security purposes.



2. To fix these, Microsoft suggest to make some changes in the registry to enable the hidden shares ([Link: https://support.microsoft.com/en-in/kb/947232](https://support.microsoft.com/en-in/kb/947232)).

To automatically make these changes we have provided you with a bat file AdminShareFix.bat. You just have to run this bat file with administrator privileges on the remote machine whose share issue you have to fix.



3. After this, check for the shares of the remote machine from the system running TaskForceCO2. You should be now allowed to login to the remote system by its UAC path. You can now select install client option from the TaskFroceCO2 console.